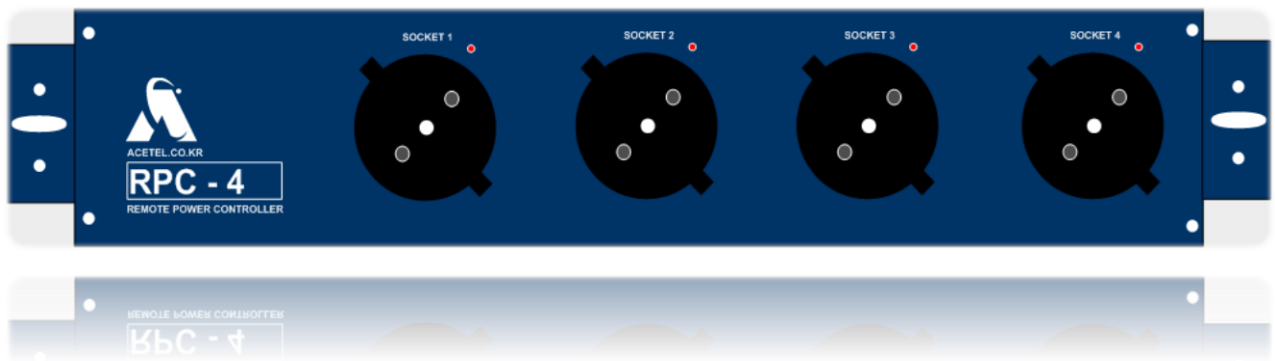


# Remote Power Control for Broadcasting RPC-04



**This manual was made to use RM3100 appropriately and safely.**

---



# Instruction manual

RPC-04 V1.0.0

## Revision History

| 날짜                        | Revision | Author     | Revision History      |
|---------------------------|----------|------------|-----------------------|
| Feb 21 <sup>st</sup> 2017 | 1.0.0    | Peter Yoon | Draw draft version up |
|                           |          |            |                       |
|                           |          |            |                       |
|                           |          |            |                       |

**Equipment name : Remote Power Controller**  
**Manufacturer: ACETEL Co.,Ltd**  
**Manufacturer country: Republic of Korea**  
**Model name : RPC-04**

### Copyright

Copyright© 2014 ACETEL Co.,Ltd

This manual is a work protected by copyright law.

Part or Whole of this manual can't reproduce, public transmission, translate and change the type to read electronica media or machine without ACETEL's previous consent.

[ ㄹ ]Final Version: Feb 16<sup>th</sup> 2017]

## Before using

1. Before usage, please read this manual and use the equipment safely and accurately.
2. This manual explains on the basis of basic setting default.
3. Real one could be different from screen and picture in this manual
4. Contents of manual could be different depends on Software version. And it could be changed without notice.
5. Please keep manual after being well informed of equipment. Then, please deliver this manual to operator who might be changed for using the equipment accurately.
6. Manual is for Operator who manage and set-up RPC-04. Therefore.
7. Please do not disassemble, repair and remodel the equipment. Because when you disassemble this equipment, it could occur a casualty and property damage by electric shock, disorder, malfunction and static electricity. When the equipment needs to repair, please contact ACETEL.

## Outline

|  |                        |
|--|------------------------|
| <b>1. Outline</b> .....                                  | 오류! 책갈피가 정의되어 있지 않습니다. |
| <b>1.1 Manual composition</b> .....                      | 오류! 책갈피가 정의되어 있지 않습니다. |
| <b>1.2 Usage sign</b> .....                              | 오류! 책갈피가 정의되어 있지 않습니다. |
| <b>2. Equipment Introduction</b> .....                   | <b>5</b>               |
| <b>2.1 Outline</b> .....                                 | <b>5</b>               |
| <b>2.2 Equipment exterior</b> .....                      | <b>5</b>               |
| <b>2.3 Equipment specification and composition</b> ..... | <b>5</b>               |
| <b>2.3.1 Specification</b> .....                         | <b>5</b>               |
| [table1] RPC-04 detailed specification .....             | 5                      |
| <b>2.3.2 Composition</b> .....                           | <b>6</b>               |
| [picture3] RPC-04 rear .....                             | 6                      |
| <b>2.4 Set up and connect cables</b> .....               | <b>6</b>               |
| <b>2.4.1 Set up</b> .....                                | <b>6</b>               |
| [그림4] RPC-04 Set up Rack .....                           | 6                      |
| <b>2.4.2 Connect cables</b> .....                        | <b>6</b>               |
| [picture5] Connect input/output cables .....             | 6                      |
| <b>3. RPC-04 IP Set up</b> .....                         | <b>7</b>               |
| <b>3.1 Configure Tool set up</b> .....                   | <b>7</b>               |
| <b>3.2 Connect PC</b> .....                              | <b>7</b>               |
| [picture6] connect ethernet cable .....                  | 7                      |
| <b>3.3 IP set up</b> .....                               | <b>7</b>               |
| <b>3.3.1 Configure Tool execution</b> .....              | <b>7</b>               |
| [picture7] ConfigTool execution .....                    | 7                      |
| [picture8] equipment inquiry .....                       | 8                      |
| [picture9] IP set up .....                               | 8                      |
| <b>4. Problem resolution</b> .....                       | <b>9</b>               |
| <b>4.1 Inspection and Resolution after set up</b> .....  | <b>9</b>               |

## 1. Outline

This manual is for Operator set up the equipment and control. Therefore, this manual require knowledge and experience about product.

### 1.1 Manual composition

1. **Outline:** Introduce various functions of **RM3100**.
2. **Composition and Specification:** Explain Composition and Specification of **RM3100**.
3. **Setting:** Explain Access with console to **RM3100** and way of setting through menu.
4. **Resolution:** Explain resolution of issue when Operator manage and install the equipment.

### 1.2 Usage signal

#### **Warning**

---

This mark means dangerous situations could happen damage to operators or damage the equipment. Please observe these respects to prevent damaging. Also, please make separate guide and keep the guide. And please refer the guide before and after installation and when handle the equipment.

#### **Caution**

---

This mark means cautions that operators have to care when they install or manage the equipment.

#### **TIP**

---

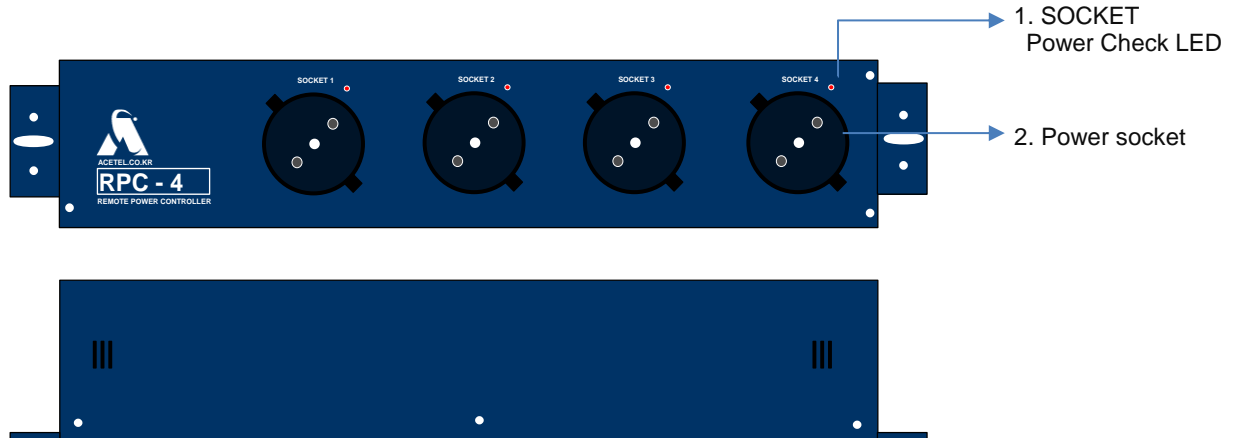
This mark means useful information when operator use the equipment.

## 2. Equipment Introduction

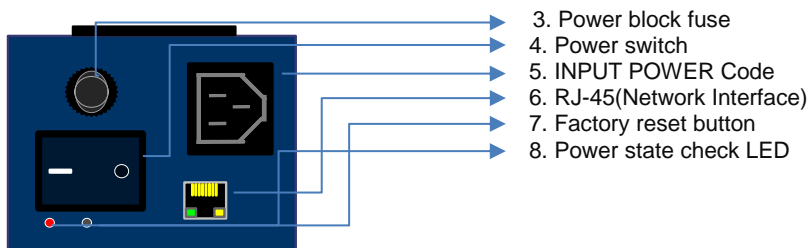
### 2.1 Outline

RPC-04 can control power of remote site via RV in main center and it support 4 sockets.

### 2.2 Equipment exterior



[picture1] RPC-04 output of socket and side



[picture2] RPC-04 input/output interface

## 2.3 Specification and Composition

### 2.3.1 Specification

| RPC-04                | Detailed specification            |
|-----------------------|-----------------------------------|
| Power                 | Male AC Input x 1 (100 ~ 240 VAC) |
| 지원용량                  | 10A(2200W)                        |
| Operation temperature | -10 ~ +40°C                       |
| Storage humidity      | -20°C ~ +85°C                     |
| Operation humidity    | < 85% non-condensing              |
| Dimension (W x D x H) | 414mm x 77mm x 75mm               |
| Weight                | 1.6 Kg                            |
| 전원차단                  | 3600W에서 과부하 전원차단기 작동              |
| Support socket        | Out Power SOCKET x 4              |
| Network               | ETH1 RJ-45 x 1ea (1000 Base-T)    |

[table1] RPC-04 detailed specification

### 2.3.2 Composition



(1) RPC-04

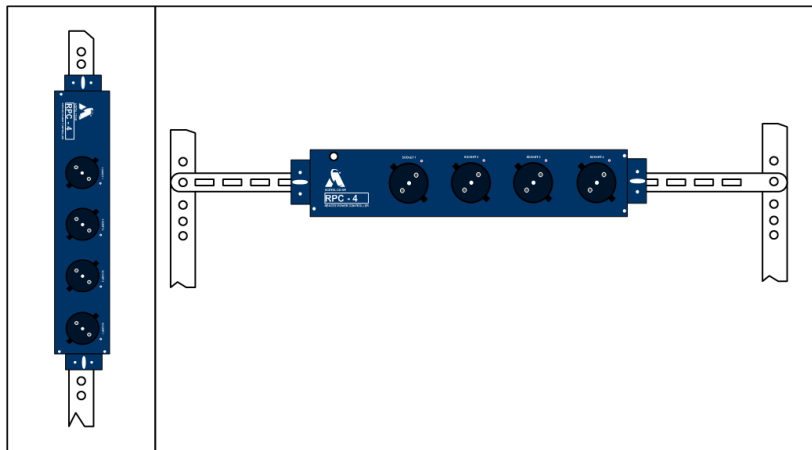


(2) Rack guide

[picture3] RPC-04 rear

## 2.4 Installation and connect cables

### 2.4.1 Installation



[picture4] RPC-04 set up rack

### 2.4.2 Connect cables

1) Please connect each cable accurately for setting and usage.



[picture5] Connect input/output cables

### 3. RPC-04 IP setting

#### 3.1 Configure Tool installation

In case of Operator set the equipment for the first time or change the IP, unzip ConfigTool107\_1.4.4.1\_install.zip and install configuration tool at PC or laptop.

#### 3.2 Connect PC

Turn the power on and connect Ethernet cables to PC or laptop.



[picture6] Connect Ethernet cables

#### 3.3 IP setting

##### 3.3.1 Configure Tool execution

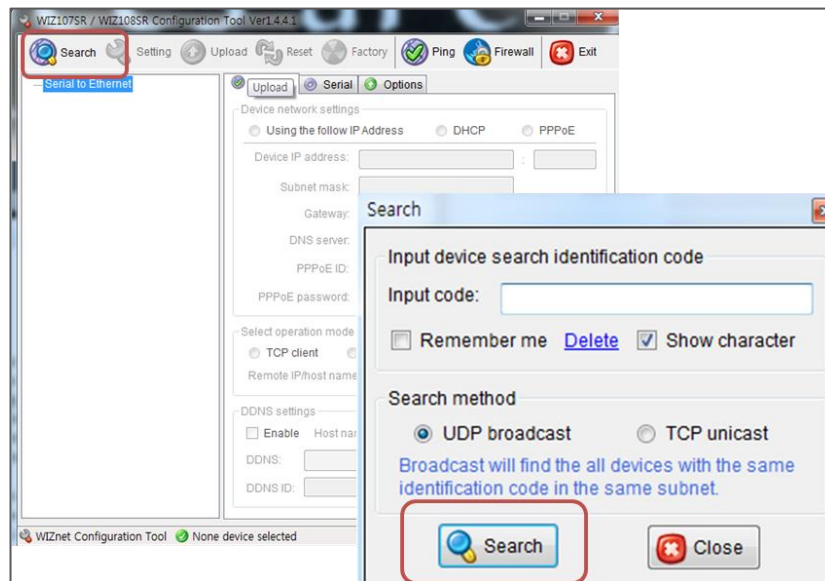
STEP01) Double click ConfigTool icon and execute the program.



[picture7] ConfigTool execution

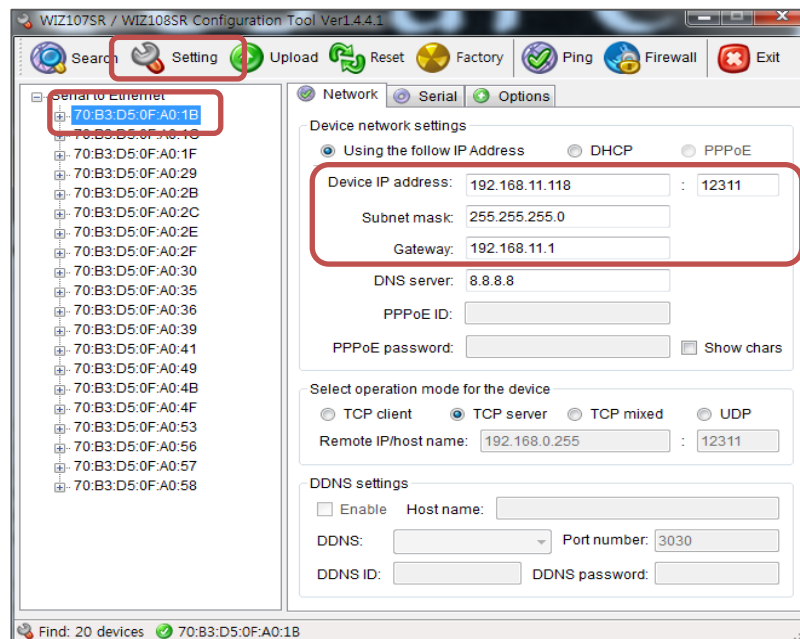


STEP02) Click “Search” button located on upper right as below picture. Then, Search window be opened and click “Search” on the bottom. Then, you can inquire the equipment on network



[picture8] Equipment Inquiry

STEP03) After select inquired equipment, set IP and save configuration after pushing “Setting” button on the top.



[picture9] IP setting

**Caution**

After set up IP, Check statement of configuration again after rebooting.

## 4. Resolution

### 4.1 Inspection and Resolution after Installation

When Issue occurs at equipment, Catching cause helps to resolve the issue.

Generally, Comparing System's current movement and normal movement is the easy to figure out cause of issue.

Below are transpirable issues and resolution when install RPC-04

#### 1) Verification Power

The issue related to power supply and resolution written in below

##### (1) Even connect power adaptor and turn front power the switch on, Is front LED off?

- Check list 1 Inspect state of power adaptor connection
- Check list 2 Inspect power supply state of outlet plugged in adaptor

##### (2) If System off after a while turn on the power

- Check list 1 Inspect if there is short circuit at connection of power
- Check list 2 Inspect if outlet cause a short circuit or electric current is unstable.
- Check list 3 In case of there are no short circuit, it could be problem of inner power device in RM3100
- Check list 4 It could be stoppage by high fever

#### 2) Verification System

Issues related to device occasionally occur because of cable, connection of cable and external devices. Below are factors that should be inspected to figure out cause of issue.

##### (1) Can't System recognize Lan interface?

- Check list 1 Inspect state of ETHERNET cable connection
- Check list 2 Inspect port state of router or switch connected to equipment
- Check list 3 Inspect using ETHERNET cable connector by LAN tester
- Check list 4 If everything is normal but ETHERNET PORT has OFF LINK LED, Please contact ACETEL

##### (2) Are there any problem with output of power?

- Check list 1 Inspect if Main power works normally
- Check list 2 Inspect power if LED of output socket light up RED
- Check list 3 In case of power of output doesn't work even though power LED of output socket light up RED, please contact to ACETEL.
- Check list 4 In case of power LED of output socket light out, check if it set lights-out at Main center. If it set NOT lights-out, please contact to ACETEL 출력 소켓의 전원 LED 가 소등인 경우 MAIN CENTER

**MEMO**



**Suite# 1801, Ace High-End Tower 8 cha, 84 Gasandigital 1-ro  
Geumcheon-gu, Seoul, Korea 08590  
ACETEL Co., Ltd([www.acetel.co.kr](http://www.acetel.co.kr))  
Tel: 02. 2025. 8677 / FAX : 02. 2025. 8678**